

Product Technical Data Sheet

MuiltSeal® Washer

Part Number	Description
6-980-0036-6	25mm Diameter Aluminium MuiltSeal® Washer for 14g Screws

Application:

Buildex® Aluminium MultiSeal® Washer Washers are used with Hex Washer Type 17, Cyclonic RoofZips® and Teks®

Recommended for:

Fixing Ridge Cap Roof Profile to timber, purlins and steel battens.

Crest fixing Corrugated and Squarerib roofing profiles to timber, purlins and steel battens.

Refer to the specific fastener and MultiSeal® washer assembly data sheets for the particular sheet profile to host material application.

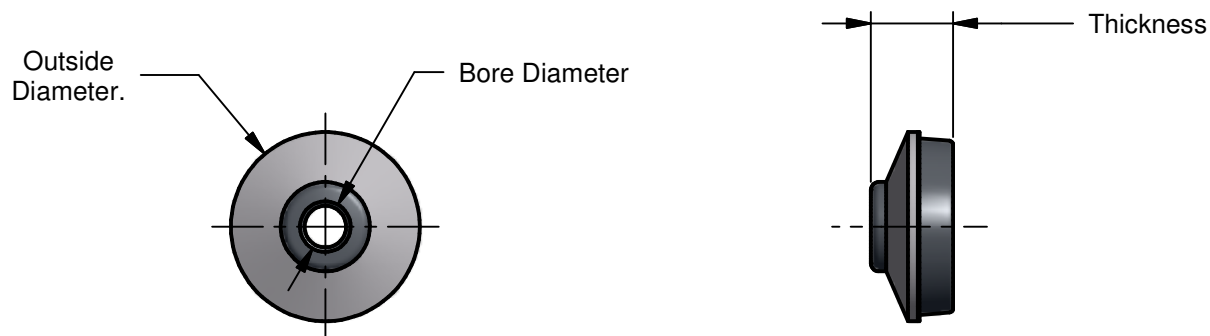
This product is not recommended for valley fixing sheet profile.

Material: Aluminium and Non Conductive EPDM



Product Technical Data Sheet

MuiltSeal® Washer



Description	Outside Diameter	Bore Diameter	Thickness
25mm Diameter Aluminium MuiltSeal® Washer	25.0 Max.	5.5 Nom.	10.9 Max.

All dimensions nominal unless otherwise stated. Normal manufacturing tolerances apply.

Buildex® Head Office
 600 South Road
 Moorabbin Victoria 3189
 Australia
 1300 368 101
 CustomerService-MBN@buildex.com.au

Buildex® Middle Eastern Sales Office
 middleeastsales@buildex.com.au

Technical Help Desk
 Technicalhelpdesk@buildex.com.au