

## Product Technical Data Sheet

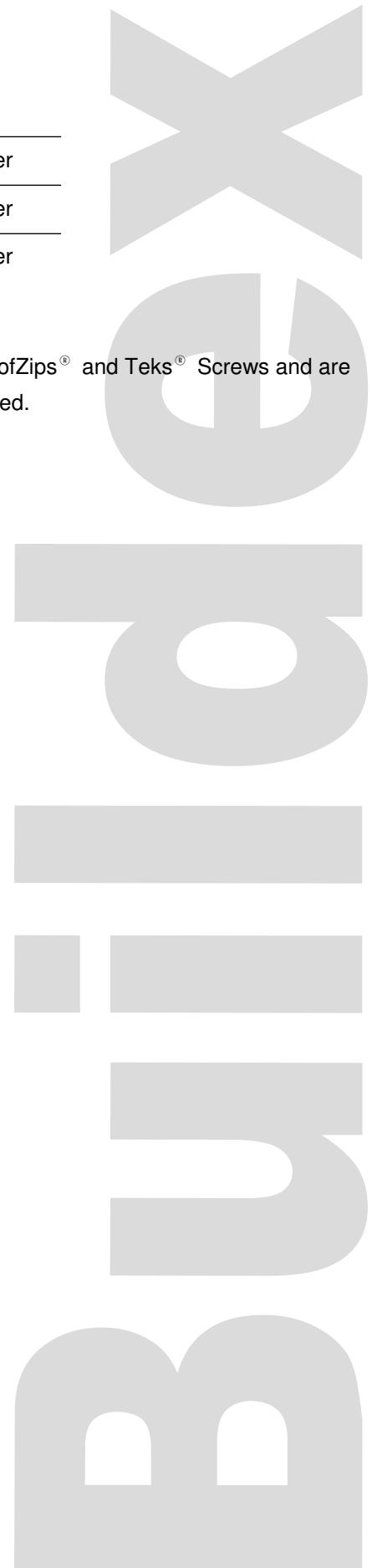
### Aluminium Bonded Washer

Part Number	Description
6-980-0003-5	16mm Diameter for 10g Screws Aluminium Bonded Washer
6-980-0005-1	16mm Diameter for 12g Screws Aluminium Bonded Washer
6-980-0023-4	19mm Diameter for 12g Screws Aluminium Bonded Washer

**Application:**

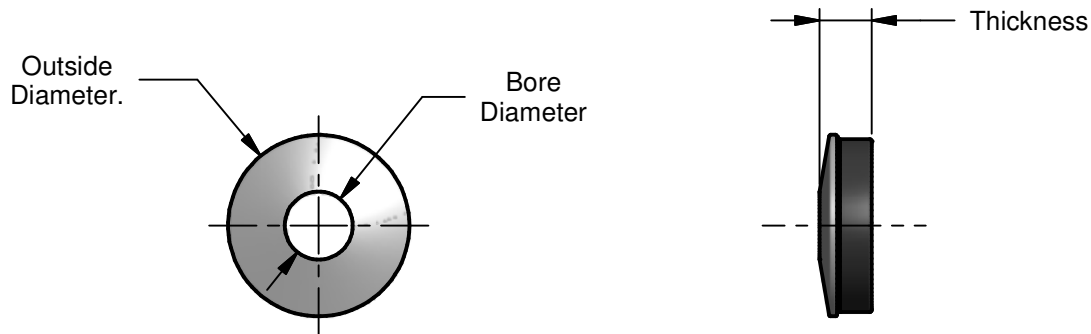
Buildex® Aluminium Bonded Washers are used with Hex Washer Type 17, RoofZips® and Teks® Screws and are designed for fixing roof sheet or side cladding where a waterproof seal is required.

**Material:** Aluminium and Non Conductive EPDM



## Product Technical Data Sheet

### Aluminium Bonded Washer



Description	Outside Diameter	Bore Diameter	Thickness
16mm Diameter for 10g Screws Aluminium Bonded Washer	16.0	3.8	4.7
16mm Diameter for 12g Screws Aluminium Bonded Washer	16.0	4.1	4.7
19mm Diameter for 12g Screws Aluminium Bonded Washer	19.0	4.1	4.7

All dimensions nominal unless otherwise stated. Normal manufacturing tolerances apply.

Buildex® Head Office  
600 South Road  
Moorabbin Victoria 3189  
Australia  
1300 368 101  
CustomerService-MBN@buildex.com.au

Buildex® Middle Eastern Sales Office  
middleeastsales@buildex.com.au

Technical Help Desk  
Technicalhelpdesk@buildex.com.au